

**900~1030nm High Power In-line Isolator****Features**

Low insertion loss  
High extinction ratio  
High stability & Reliability

**Applications**

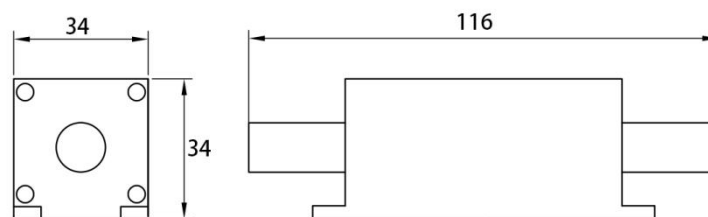
Fiber Amplifier  
Fiber sensor  
Fiber Laser Marking  
Laboratory R&D

Parameter	High power in-line isolator, HPMIIT	Unit
	PM isolator	
Operating wavelength	980 、 1030 or customized	nm
Bandwidth	±5	nm
Typical peak isolation	≥30	dB
Isolation in band at 23°C	≥25	dB
Insertion loss at 23°C	≤1.2	dB
Polarization dependent loss	/	dB
Extinction ratio	≥18 (Type B) , ≥20 (Type F)	dB
Return loss	≥45	dB
Fiber type (can be customized)	Panda PM fiber	-
Input max. power handling	10 (continue) 、 10K (pulsed)	W
Dimensions (L x W x H )	116 x 34 x 34	mm
Operating temperature	-5 ~ +50	°C
Storage temperature	-20 ~ +70	°C

\*Type B: Both axis working, Type F: Fast axis blocked.

\*Backward power<10% input power

\*The Above specifications are without connectors. IL is 0.50dB higher, RL is 5dB lower and ER is 3dB lower for each connector added. The default connector key is aligned to slow, the connector handle power ≤0.3W

**Mechanical Dimension****Ordering Information**

specification	GCHPMIIT
Fiber length	Specify
Package size	116 x 34 x 34
Connector type	FC/APC, FC/APC etc
Average power handling	300mW, 10W etc
power condition	P: C=Continue Wave, P(10)=Pulse Peak Power(10KW),etc
Fiber type	Hi780C, SM800, SM85-PS-U25D, etc
Pigtail diameter	0=bare fiber, 1=900μm
Operating wavelength	980nm etc
Working axis	Just for PM type, F or B, F: fast axis blocked; B: Both axis working